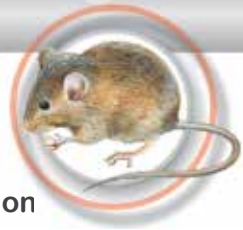


# MOUSE TRAP



## Fastest-to-service Trapping Station

### MOUSE TRAP IS FAST, CONVENIENT AND SAFE

- Sleek and unique design
- Quick set and servicing
- Re-usable and safe



- **Quick set:** Arm the trap by lifting metal bar
- **Versatile and easy to use:**
  - Fits every situations, including public places, shops, restaurants, households, offices, etc.
  - Slightly opaque tunnel allows keeping catch concealed
  - Dispose of catch swiftly and easily without any contact with the mouse
  - Can be used again and again
- **Safe:**
  - Place lure from under the trap with no risk of setting off
  - Finger protection device allows for safe handling, minimizing risks for children, pets and no-tarets.



*POSITION bait or lure before arming*



*ARM the trap*



*SET the trap in chosen area*



*CATCH: Metal bar triggered by mouse*

*PLACE Mouse Trap on rodent pathways. Remember that mice also travel up and down.*

*Examples of placements: along walls; in cupboards; on shelving units; behind fridges; etc.*



*RELEASE bar and shake to dispose of mouse*

